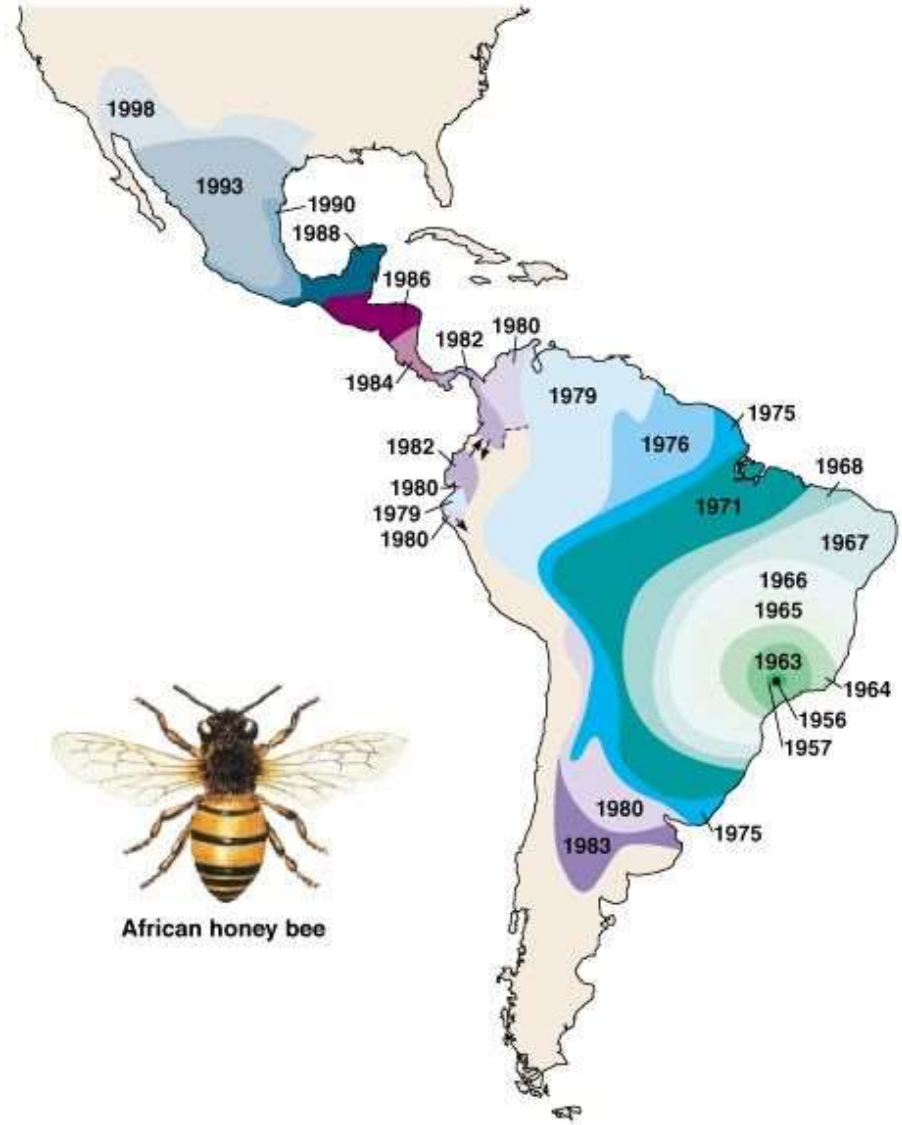




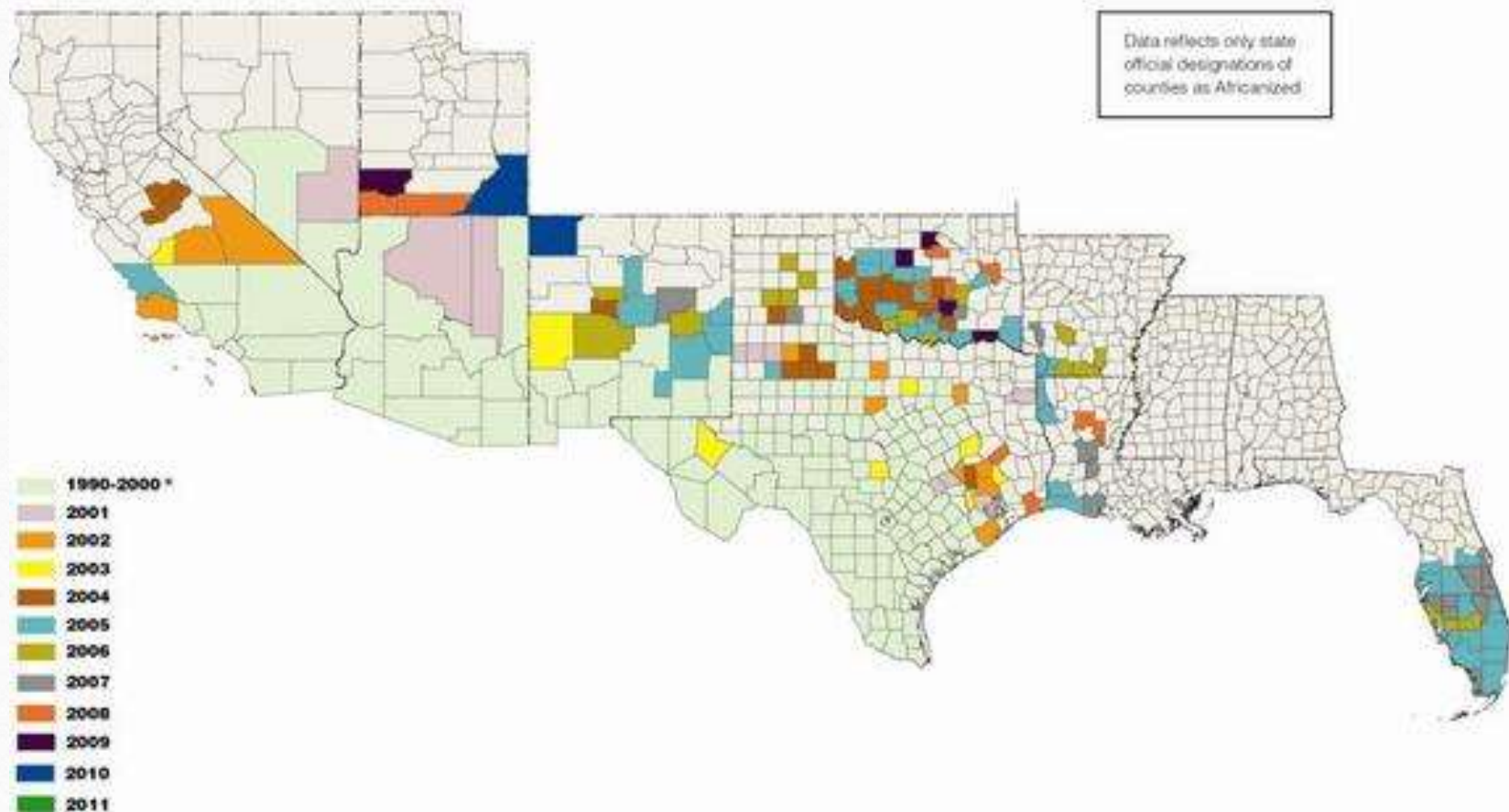
- Africanized Honey Bees (AHB)
- Accidental Release 1956
- Entered USA in 1990
- Still Spreading Today



Copyright © Pearson Education, Inc., publishing as Benjamin Cummings.

Spread of Africanized honey bees by year, by county

Updated March 2011
Agricultural Research Service, USDA



The Langstroth Beehive

Outer Cover
Inner Cover

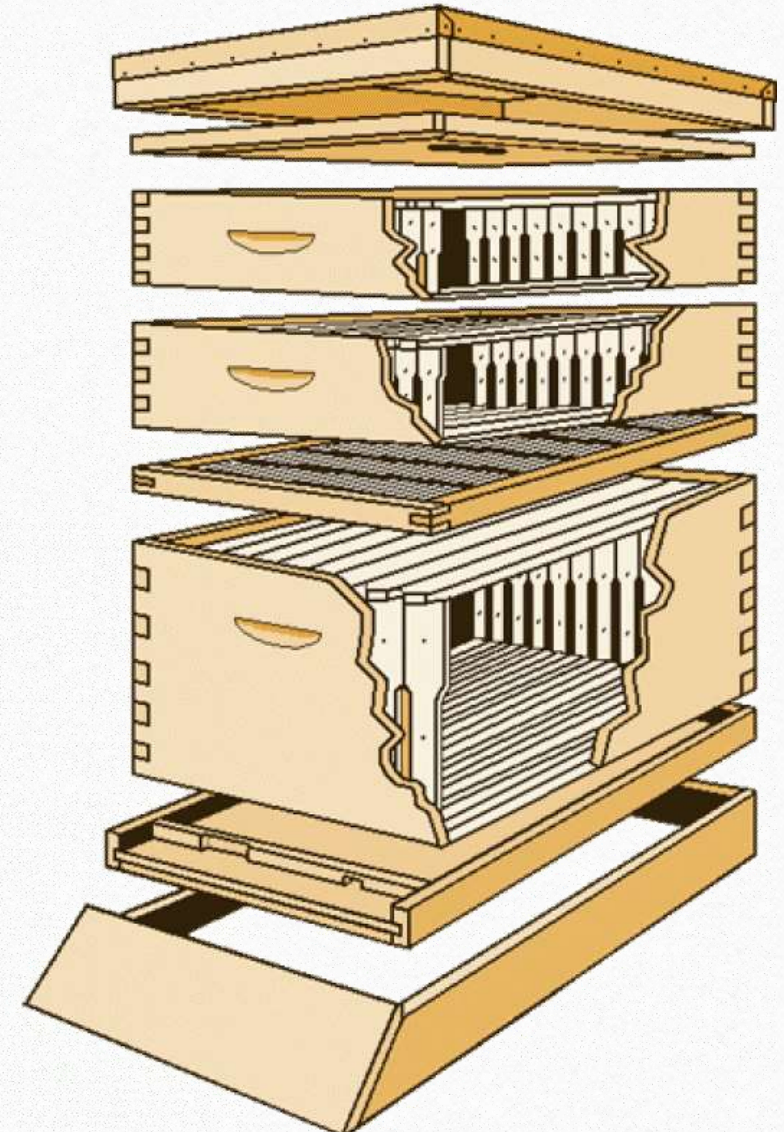
Honey supers

Queen Excluder

Deep Super

Bottom Board

Stand



Feeders

- Many Types of Feeders To Choose From



Smoker,
There Is
An Art To
Lighting A
Smoker



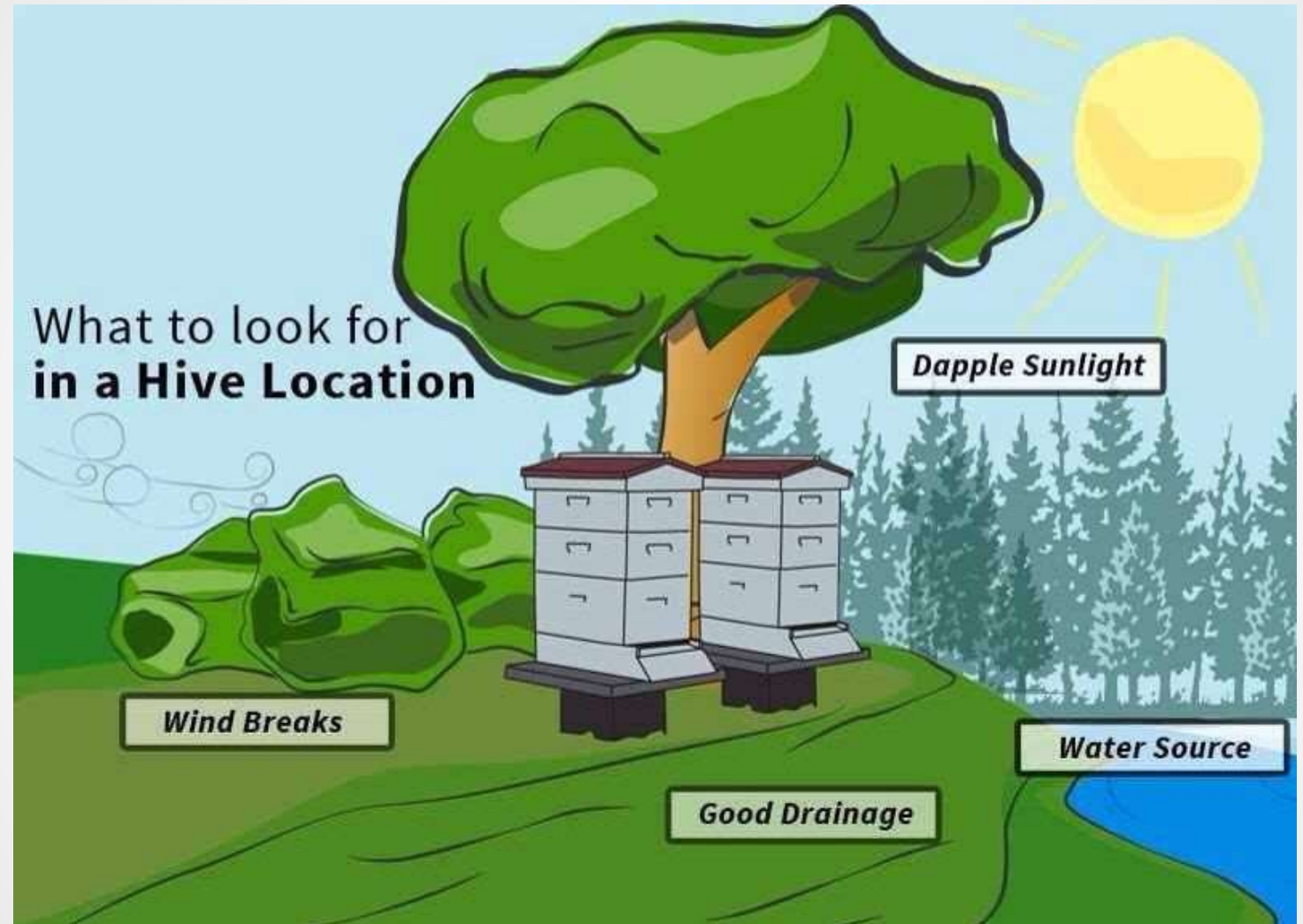
Personal Protective Gear (PPG)



Some Of The Tools You Will Need



Choosing A Location



First Year Budget

Hive	\$265
Bees	\$250
Ancillary Equipment	\$280
Personal Protective Gear	\$180
Tools	\$185
Feed	\$45
Other	\$250
Total	\$1,455

Break Time



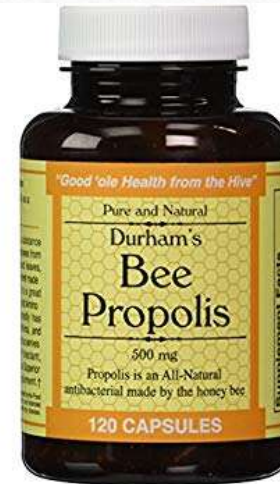
Products From the Hive

How do I make Money with my bees?

What Are The Benefits Of Having Bees



Pollen and Propolis





Agriculture Property Tax Valuation



Pollination Contracts For Agriculture



How Many Acres Does the Law Allow for Keeping Bees?

- Texas law restricts the property covered by this valuation to between 5 and 20 acres, so you must have at least 5 acres to qualify. Many counties remove an acre for buildings or a homestead. In that case you would need 6 acres to qualify.

What do my bees have to do

- Be aware that you don't have to sell honey or hive products to qualify. You simply have to produce food or other tangible products having a commercial value. (Honey, Wax, Pollen and anything of value) The key word is "produce". You can consume it or gift it.
- When you apply with the appraisal district you will be applying for a 1-D-1 valuation. There is an old 1-D valuation that requires profit. It does not apply to you.

How Many Hives Do You Need?

- Although the rules vary from county to county, many counties require between 6 and 12 colonies of bees but some counties are requiring less, so check with your appraisal district. How many colonies you need are called “intensity” by the appraisal district.

You Don't Have to Become A Beekeeper (But you can if you want to)

- You can buy and manage the bees yourself, or appraisal districts allow you to have someone else manage bees on your land. You may be able to find beekeepers in your part of the state to provide and work bees for you.
- I lease and manage colonies for landowners seeking ag valuation.
- A lease and other documents may be required in addition to the tax forms.

Agricultural Valuation Can Save Some Serious Money

- Ag value savings depend on the difference between the market value of your property and the production valuation you receive from your appraisal district. It is not uncommon for the savings to be over \$1000 per year.

How about a break?



Get Everything You Ready and Setup Before Your Bees Arrive

- 2 Hive Bodies
- Stand
- 2-parts water to 1-part sugar
- Feeder
- Tools
- Top, Bottom Spacer
- Personal Protective Gear (PPG)
- Anything you can think of





Your New Bees



Nucs (Nucleus) Or Packages



Install Packages





Common Queen Cages



Candy

Cork



Cork





Introduce The Package



Internal Feeders!!!!



Installing Your Nuc

Growing Nucs

- Nuc producers grow them carefully
- They grow them in the best conditions
- Many are growing at one time
- Careful evaluation is made before they are sold
- They are expensive to properly grow and many never make the cut to be sold



Your Nuc is Getting Ready



Transporting Nuc



Installing Your Nuc



Buy Established Colony



The Quickest Way To Get Established



Always
Feed Your
New Bees

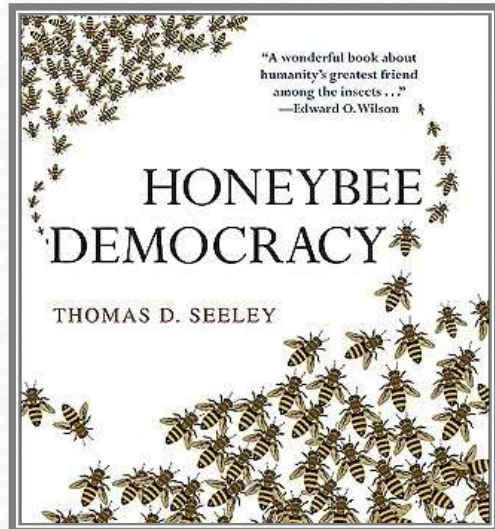
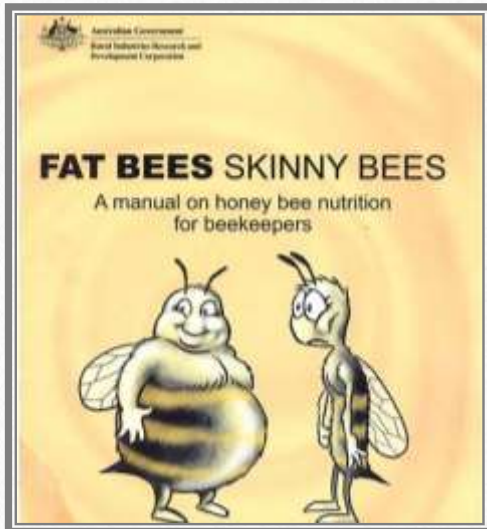




SWEAR JAR

**TELLING PEOPLE
ABOUT MY BEES
WHEN I WASN'T
ASKED JAR**

Resources



YouTube

- The National Honey Show
- Inside The Hive TV
- David Burns

Web Sites

- <http://entnemdept.ufl.edu/honey-bee/>
- Honey Bee Health Coalition
- <http://scientificbeekeeping.com/>
- <https://honeybeehealthcoalition.org/>