

# Life Cycle and Jobs

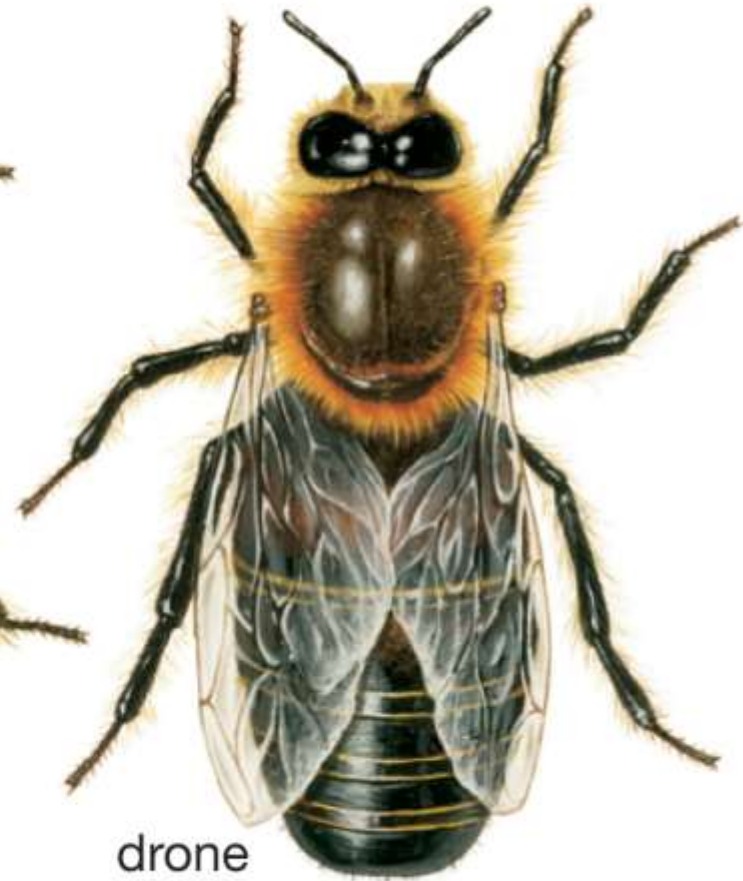
**honeybee**  
(*Apis mellifera*)



worker



queen

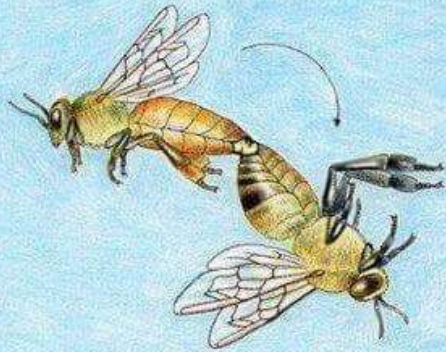


drone

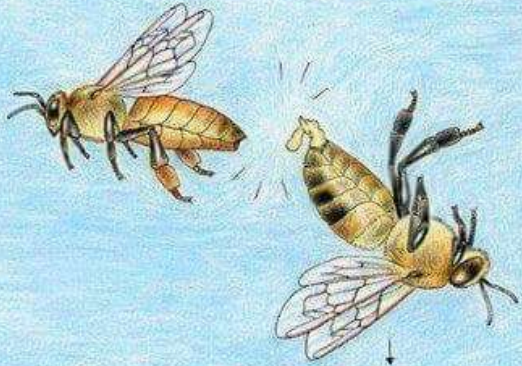




Initial mounting position.



Intermediate position.



Drone separation by genital explosion.



Eversweet  Apiaries

Honeybees are usually selected for their positive traits which are passed down from the queen & the drones she mated with. There are pros & cons for each breeds' traits. These breeds are the most common in the United States.

# HONEYBEE BREEDS



TRAIT	AFRICAN	BUCKFAST	CARNIOLAN	CAUCASIAN	CORDOVAN	ITALIAN	RUSSIAN
CALM ON COMBS	1	10	8	10	7	5	5
DEFENSIVE BEHAVIOR	10	1	1	1	1	2	7
EARLY BUILD UP	10	8	10	6	5	8	10
FORAGES EARLY	5	10	10	1	5	5	10
HONEY COLLECTION	10	10	10	10	10	10	10
HONEY STORAGE	1	10	10	8	8	10	5
NOSEMA RESISTANT	10	5	6	1	5	5	5
POLLEN COLLECTION	5	5	10	5	5	5	5
PROPOLIS COLLECTION	5	5	2	10	5	5	5
TENDENCY TO SWARM	10	2	5	2	5	2	7
TRACHEAL MITE RESISTANT	8	10	8	3	5	5	9
VARROA RESISTANT	10	3	4	3	3	3	5
WINTERS WELL	1	10	10	10	5	10	10

1 = Low Tendency for Trait

10 = High Tendency for Trait

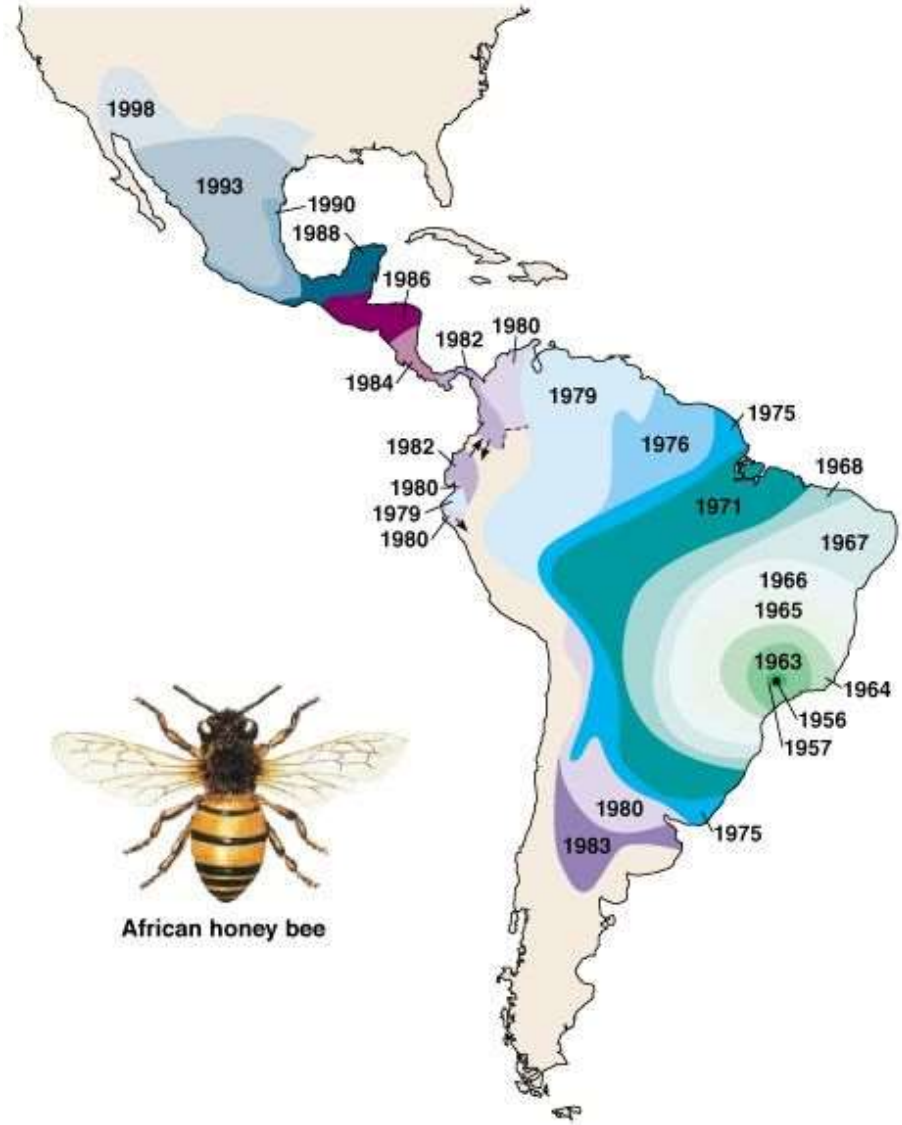
85 Everhart Drive  
info@eversweetapiaries.com

Kearneysville, WV 25430  
eversweetapiaries.com

(304) 876-3832  
facebook.com/eversweetapiaries

COPYRIGHT © 2014 EVERSWEET APIARIES. ALL RIGHTS RESERVED.

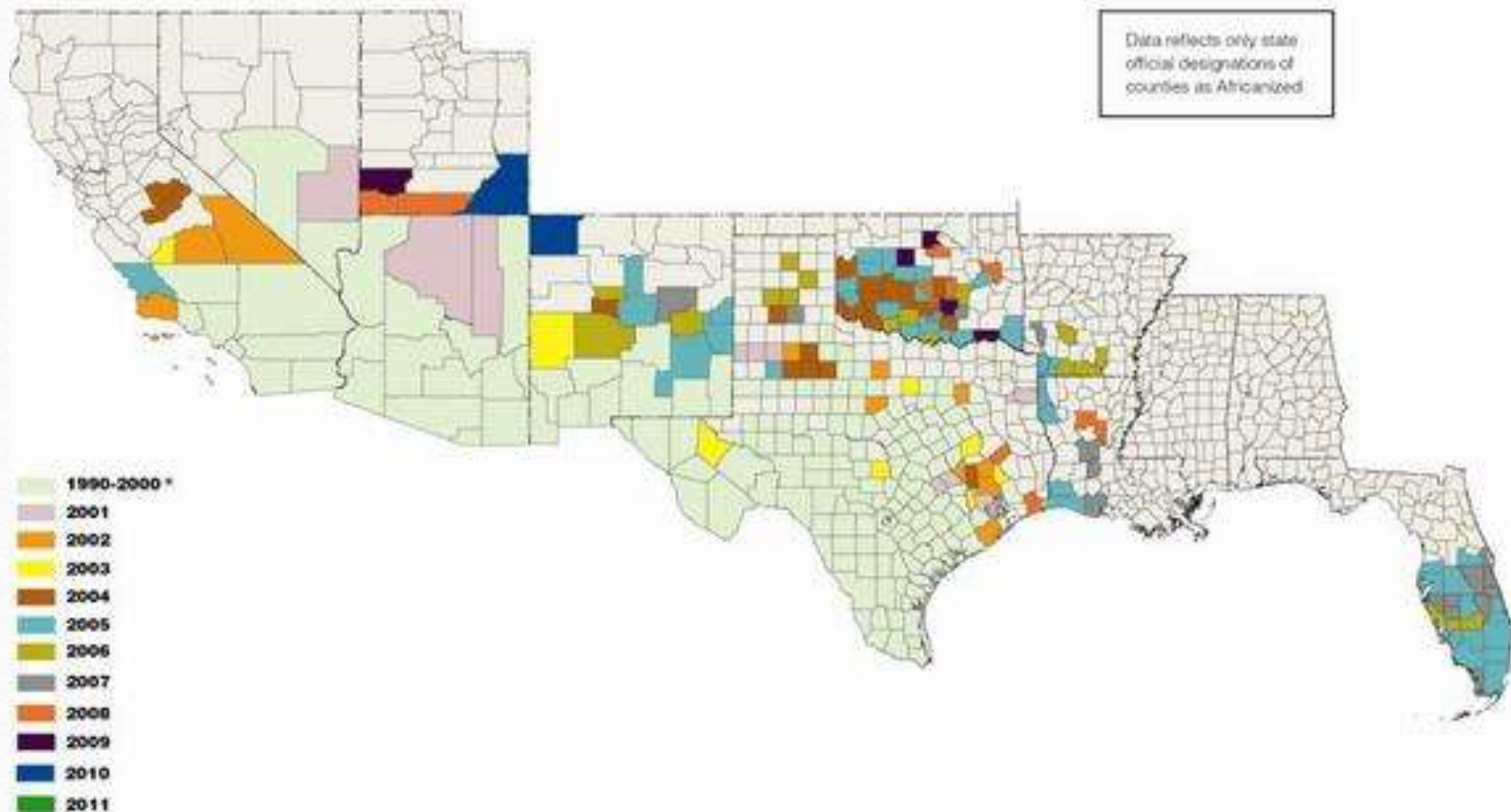
- Africanized Honey Bees (AHB)
- Accidental Release 1956
- Entered USA in 1990
- Still Spreading Today



Copyright © Pearson Education, Inc., publishing as Benjamin Cummings.

# Spread of Africanized honey bees by year, by county

Updated March 2011  
Agricultural Research Service, USDA





# Interesting facts about the Honey Bee

- All worker bees are female
- A queen is the largest bee in the hive. She can lay up to 2,000 eggs per day, twice her own body weight per day.
- Honey bees have five eyes
- Bees have been producing honey for at least 150 million years
- Honey stored in air tight containers never spoils. Sealed honey vats found in King Tut's tomb still contained edible honey, despite over 2,000 years beneath the sands.
- To make honey, bees drop the collected nectar into the honeycomb and then evaporate it by fanning their wings.
- 80% of the pollination of the fruits, vegetables and seed crops in the U.S. is accomplished by honeybees.

# The Langstroth Beehive

Outer Cover  
Inner Cover

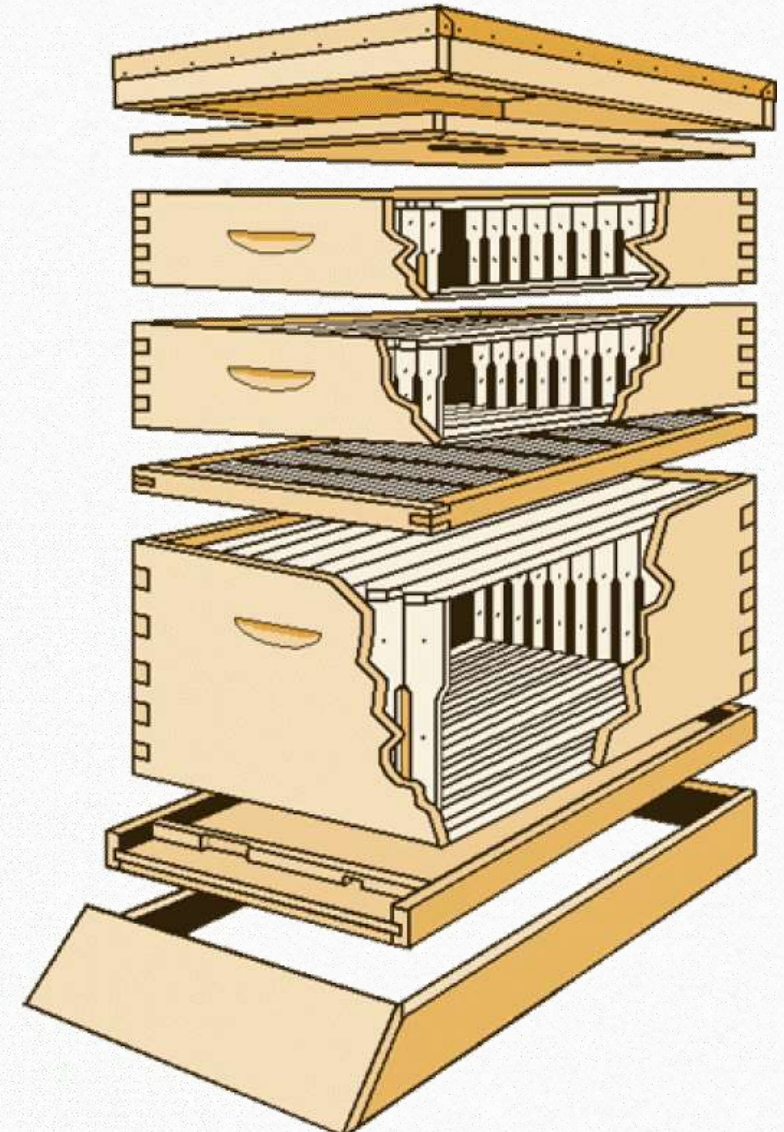
Honey supers

Queen Excluder

Deep Super

Bottom Board

Stand



# Langstroth Hive, Frames, Queen Excluder and Entrance Reducer



# Screen Bottom, Inner Cover and Outer Cover

---



# Warre Behive



# Bees Do Not Read Instructions

---

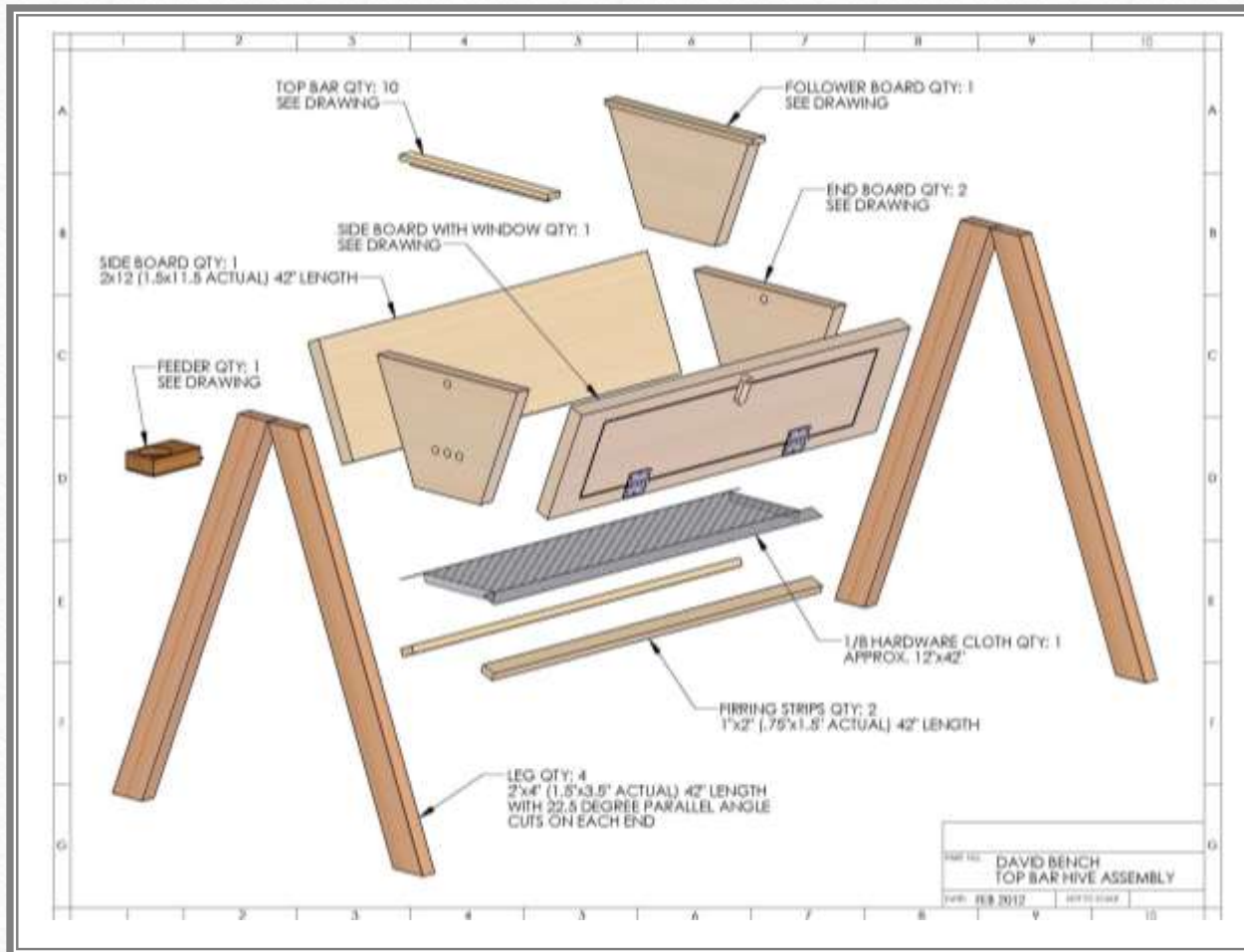


# Break Time

---



# Top Bar Hives



- Top Bar
- Side Boards
- End Boards
- Follower Board
- Screen or Solid Bottom
- Observation Side
- Hinged Top



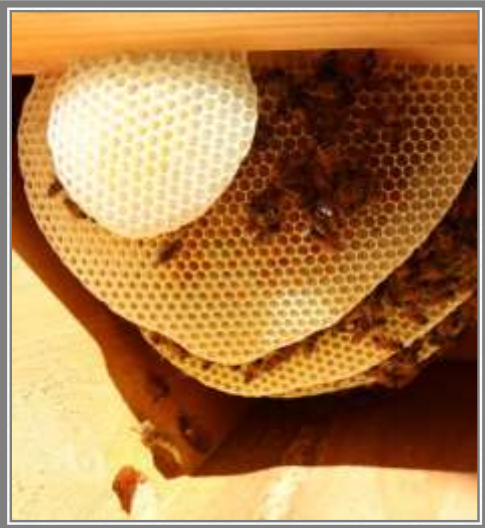
# Hinged Top and End Entrance

---



# They Build The Comb on the Bars

---



# What Do You Need To Get Started

- Bottom Board
- 2 Deep Brood Chambers
- 1 Medium Supper
- Deep Frames
- Medium Frames
- Inner Cover
- Outer Cover
- Queen Excluder



# Feeders

---

- Many Types of Feeders To Choose From



Smoker,  
There Is  
An Art To  
Lighting A  
Smoker



# Personal Protective Gear (PPG)

---



# Some Of The Tools You Will Need

---



# Your New Bees



## Nucs (Nucleus) Or Packages





# Buy Established Colony

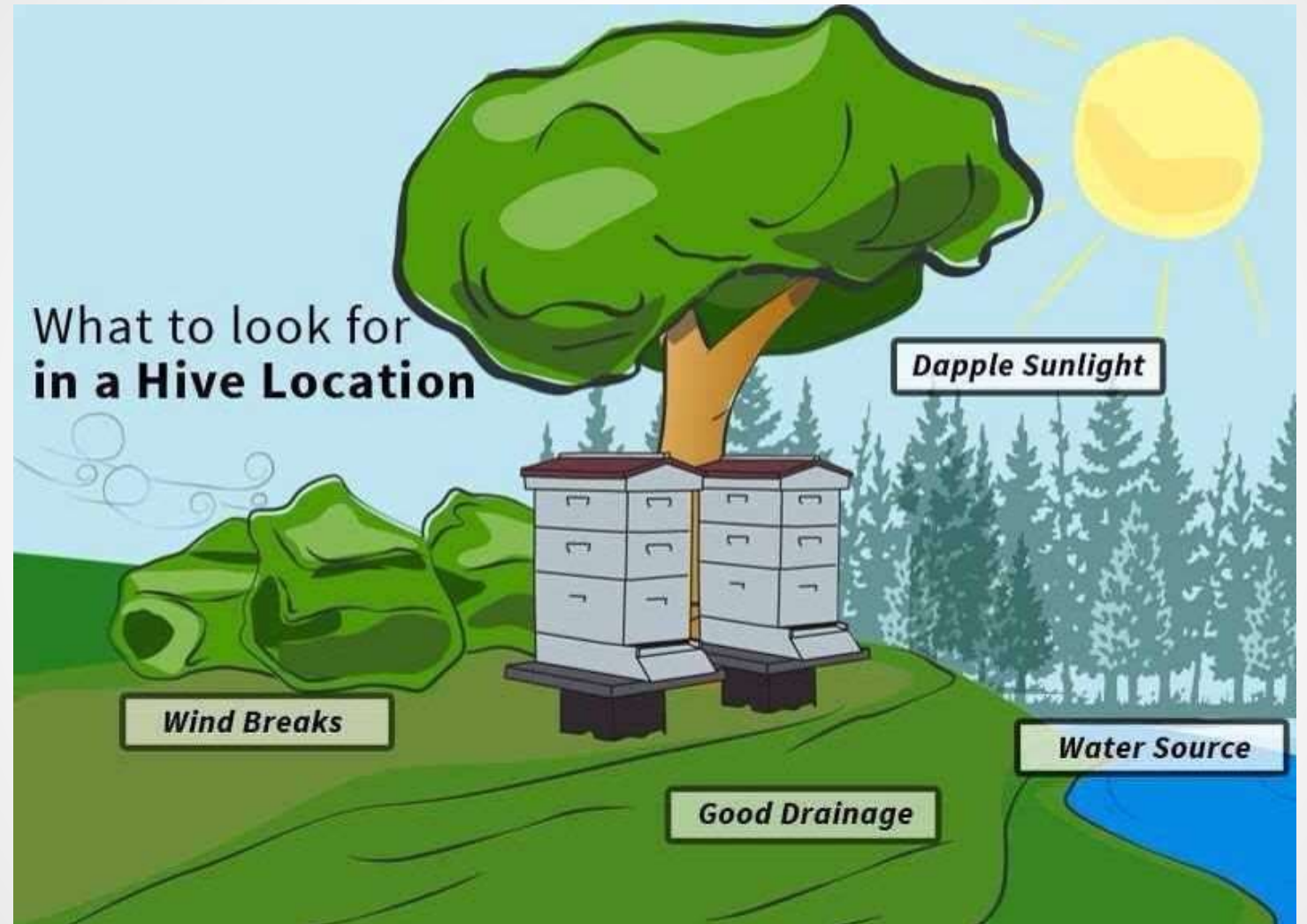


# First Year Budget

---

Hive	\$265
Bees	\$250
Ancillary Equipment	\$280
Personal Protective Gear	\$180
Tools	\$185
Feed	\$45
Other	\$250
Total	\$1,455

# Choosing A Location





**BREAK  
TIME !!**

# How Much Time Is Required

The time it takes is affected by many factors and these are rough estimates and your time will vary

- Hive Inspection should be about 15 to 20 minutes for first hive and 10 minutes for each additional hive every 1 or 2 weeks
- Add 10 minutes for feeding time as needed
- Treating for mites 10 minutes per hive per treatment for mites. The number of treatments varies depending on type of treatment used
- Honey removal or adding additional supers about 10 to 20 minutes per hive
- Additional time for preparation and other non hive activities should average about two hours each month with some months require more

**Plan on about 8 to 10 hours per month. As your experience grows the time requirement may diminish somewhat**

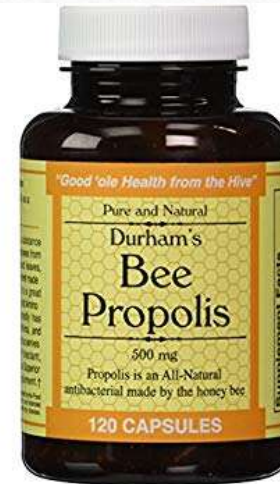
# What Are The Benefits Of Having Bees

---



# Pollen and Propolis

---



## Agriculture Property Tax Valuation

---



## Pollination Contracts For Agriculture





# Small Hive Beetle



# Wax Moth



# Varroa Destructor

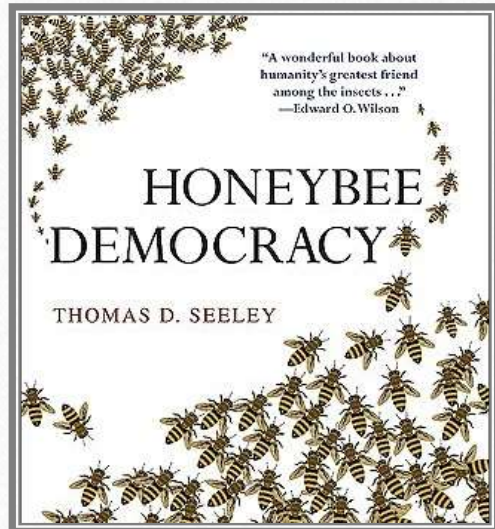
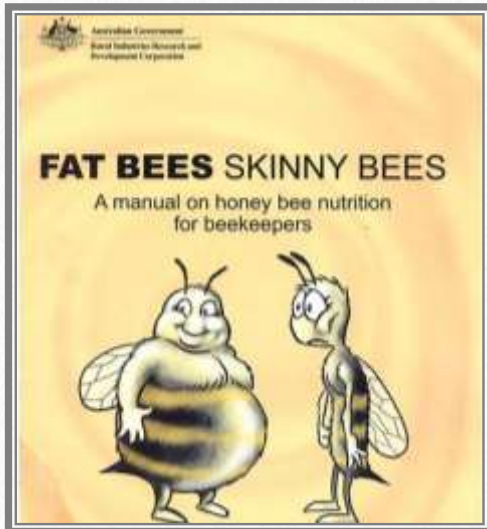




© 2014 The Honey Beekeepers of America

# Resources

---



## YouTube

- The National Honey Show
- Inside The Hive TV
- David Burns

## Web Sites

- <http://entnemdept.ufl.edu/honey-bee/>
- Honey Bee Health Coalition
- <http://scientificbeekeeping.com/>
- <https://honeybeehealthcoalition.org/>